

**Finn Blucher**

Project Support Engineer

[fblucher@novell.com](mailto:fblucher@novell.com)



**Novell.**

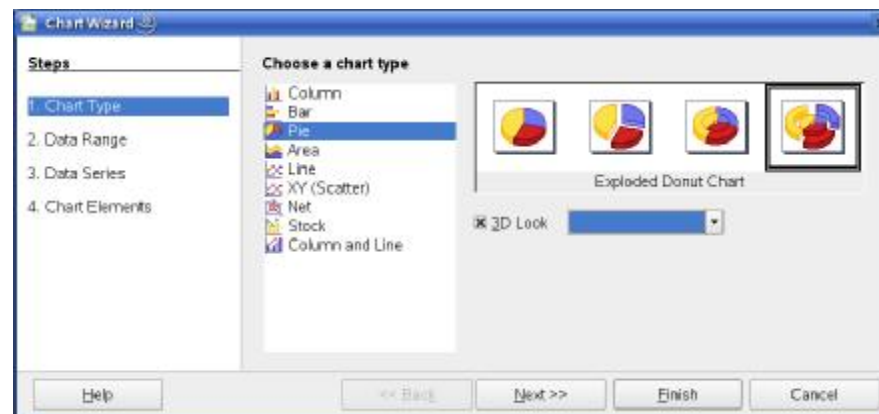
# Improvements to all components

- Chart
- Writer
- Calc
- Base
- Draw
- Impress



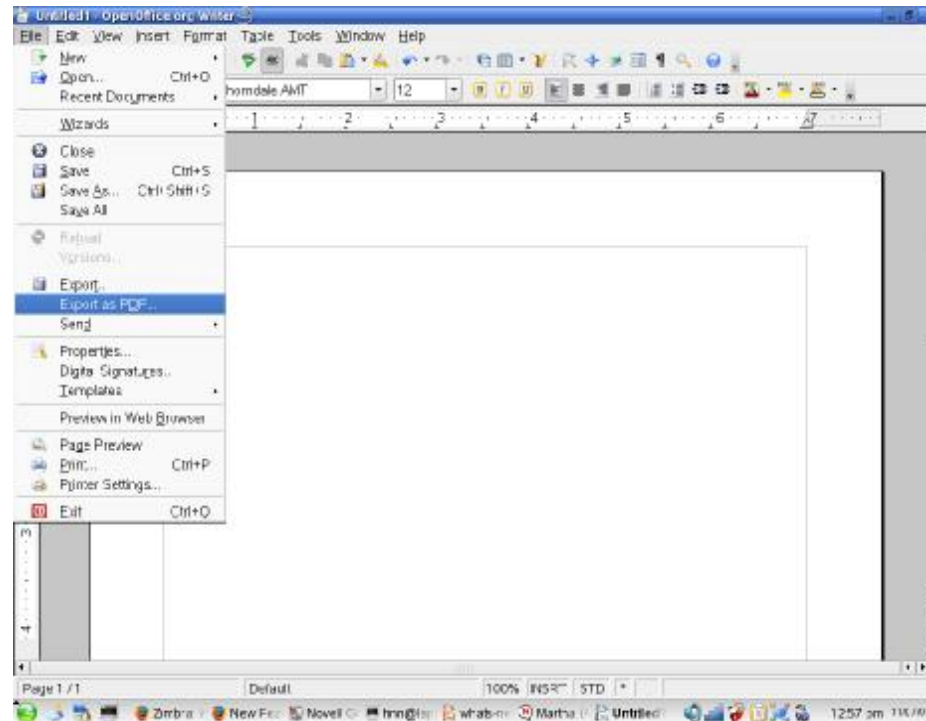
# Chart

- Major revamp for 2.3
- Creation of charts more logical and simple
- Default Chart appearance has been improved
- 3D Charts greatly improved in appearance and ease of creation
- New Chart types including “Exploding Donut”
- Improved data editor



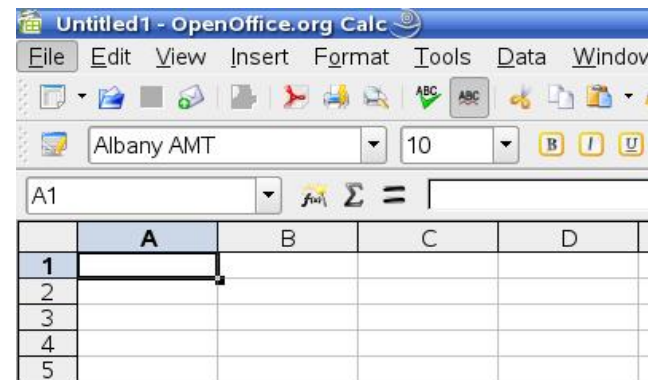
# Writer

- The way writer displays various pages has been improved
- A new filter for exporting to MediaWiki has been included



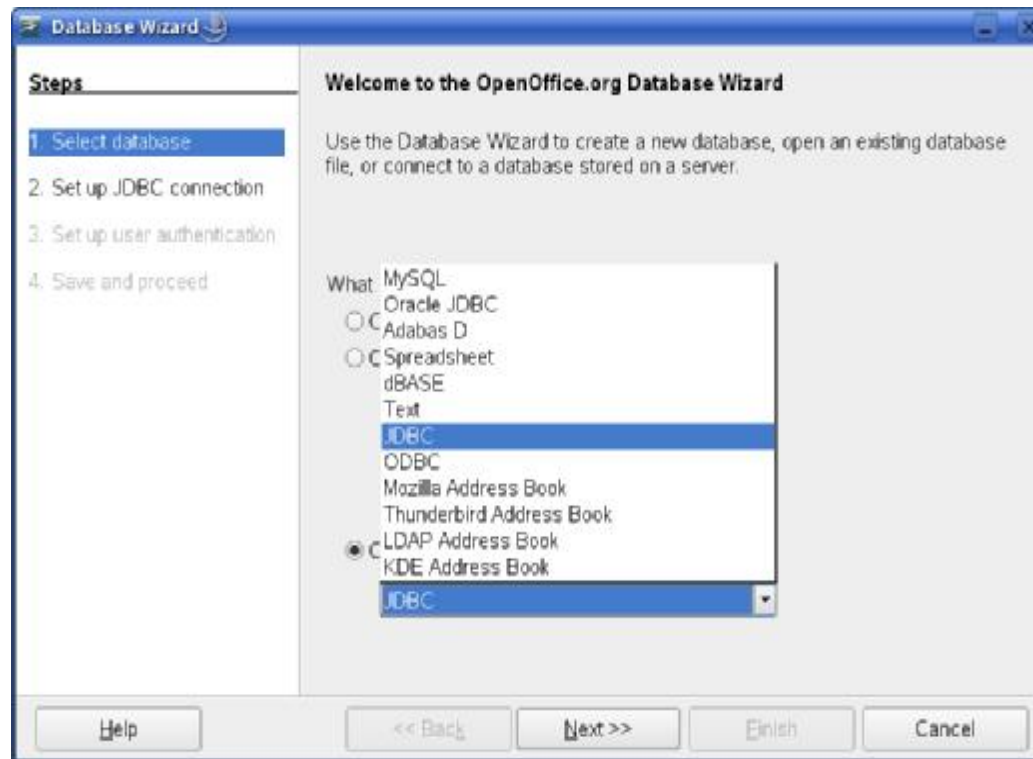
# Calc

- Calc now supports in line matrix/array constants in formulas
- Summation has been made more powerful and more intuitive
- The display of error values has been made more user-friendly
- Compatibility with Microsoft Excel has been improved with workarounds for cotangent functions



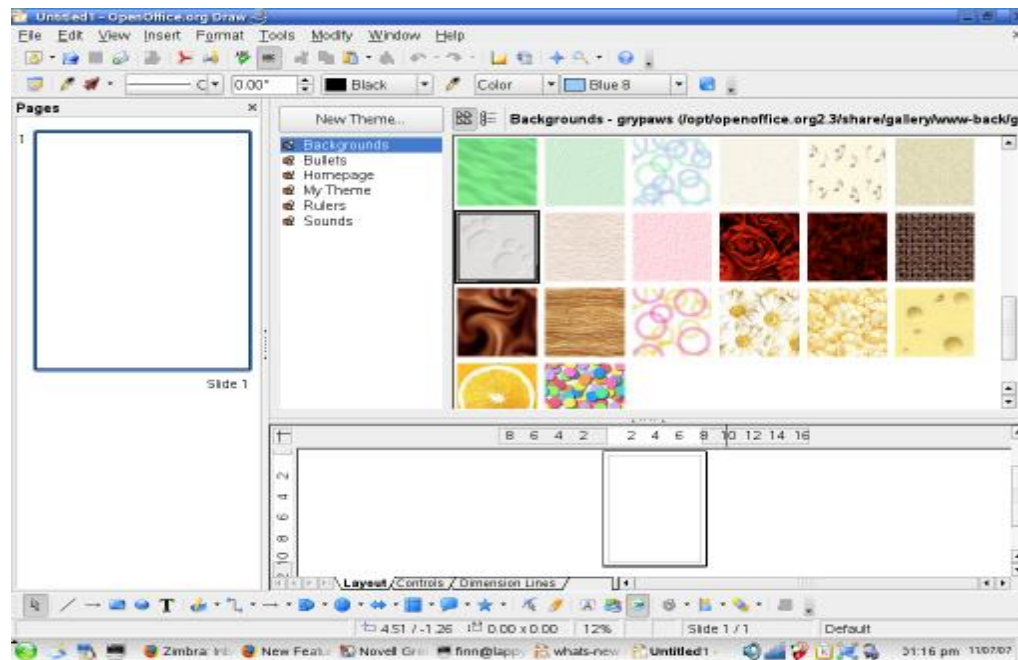
# Base

- New “Report Builder” extension
- Further keyboard shortcut improvements



# Draw

- A number of accessibility improvements
- Support for PNG images when exporting to HTML



# Impress

- The much-loved 'move along curve' animation feature has been re-introduced, despite claims that over-use could easily create sea-sickness among sensitive members of an audience





# OpenOffice Extensions

- Great deal of work producing new extensions
  - Report Builder
  - eFax
  - Web 2.0 collaboration and document management
  - Auto Text
  - Language Tool





# Basic Considerations

- OpenOffice is fully Open Source
  - Extensions are beyond one company:
    - > Open XML Converter
- OpenOffice will always be Open Source (LGPL)
  - Once codes is released under the LGPL it can not be re-licensed
- OpenOffice uses current industry standards (OASIS)
- Both documents can be read and written by both Microsoft Office and Open Office





# Word over Writer

- Grammar Checker, built in
- Some Word Macro compatibility
- Online Collaboration and Smart Tags
- Animated Text



# Writer over Word

- Creating PDFs
- Simplicity
- Extensible Grammar Checker
- HTML Production is generally considered “cleaner”
- Web Log integration
- Writer Macros
- Advanced Find and Replace (searching for fonts or attributes)
- File Size





# Major Australian Deployments of OpenOffice

- Judicial Commission, NSW
- University of Melbourne
- De Bortoli Wines
- MIP Holdings

# Novell. An Enterprise Environment



- The Company
  - Over 5000 employees
  - Over 100 offices world wide
  - 40% of workforce outside of traditional office







# Conversion to OpenOffice

- **Target – 100% of Novell using Open Office**
- **Success Criteria:**
  - New documents get created using OpenOffice
  - Internal Collaboration done with OpenOffice
- **Results:**
  - 100% compliance on installing the software
  - Over 95% were actually using it for routine work
- **Potential Impediments to further adoption and use:**
  - Collaboration with external parties – solved in OO 2.x
  - Application plug-ins (Office is the std); solved in OO 2.x
  - Complex document conversion requires assistance; solved in OO 2.x
  - Spreadsheets and VB Macros; solved in OO 2.x



# Lessons Learned

- **OO is feature rich** - macro's, database connections, pivot tables, transitions, indexing
- **Training** - There are a lot of resources out there – quick reference, books, web sites, CBT
- **Get the software in people's hands** - it will accelerate the pace of group migration
- **Documents fall into three buckets** - just open it; need some help; create a report or application
- **The best way to get people to move is to put executive documents in OO** - target these
- **Keep your workforce informed** - build momentum from the top-down

**Novell.**<sup>®</sup>

## **Unpublished Work of Novell, Inc. All Rights Reserved.**

This work is an unpublished work and contains confidential, proprietary, and trade secret information of Novell, Inc. Access to this work is restricted to Novell employees who have a need to know to perform tasks within the scope of their assignments. No part of this work may be practiced, performed, copied, distributed, revised, modified, translated, abridged, condensed, expanded, collected, or adapted without the prior written consent of Novell, Inc. Any use or exploitation of this work without authorization could subject the perpetrator to criminal and civil liability.

## **General Disclaimer**

This document is not to be construed as a promise by any participating company to develop, deliver, or market a product. It is not a commitment to deliver any material, code, or functionality, and should not be relied upon in making purchasing decisions. Novell, Inc. makes no representations or warranties with respect to the contents of this document, and specifically disclaims any express or implied warranties of merchantability or fitness for any particular purpose. The development, release, and timing of features or functionality described for Novell products remains at the sole discretion of Novell. Further, Novell, Inc. reserves the right to revise this document and to make changes to its content, at any time, without obligation to notify any person or entity of such revisions or changes. All Novell marks referenced in this presentation are trademarks or registered trademarks of Novell, Inc. in the United States and other countries. All third-party trademarks are the property of their respective owners.

