

## After completing this lesson, you will be able to:

- Customize Internet Explorer's security settings.
- Set Content Rating preferences.

1

## Default Security Zones

Zone	Description	Security Level
Local Intranet	Resources that are part of your intranet.	Medium
Trusted Sites	Sites containing content you trust.	Low
Restricted Sites	Sites you don't trust.	High
Internet	Any files not on your PC, intranet, or assigned to another zone	Medium

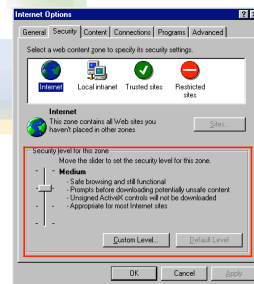
2

## Security Levels

<b>High</b>	Blocks potentially dangerous content or processes from downloading onto your computer.
<b>Medium</b>	Provides a Security Warning dialog box when you visit a site that attempts to download content.
<b>Low</b>	Ignores potentially dangerous content.
<b>Custom</b>	Enables you to define what types of information can be downloaded.

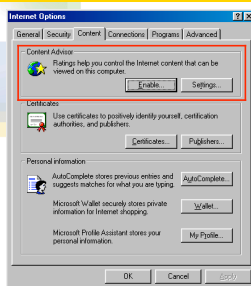
3

## Reviewing Security Zones



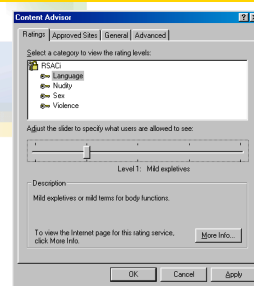
4

## Content Advisor



5

## Configuring Rating Levels



6