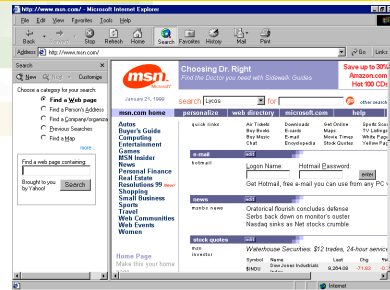


After completing this lesson, you will be able to:

- Search for information on the Web.
- Create a favorites list.
- Use and modify your History folder.

1

Searching the Internet



2

Search for a Web Site

To search for a Web site

1. On the toolbar, click the Search button.
2. The Search Assistant is displayed.
3. Type your search word in the Find A Web Page Containing text box.
4. Click the Search button.

(continued)

3

Search for a Web Site

To search for a Web site

(continued)

5. The search is performed. Links to categories and Web pages containing information matching your search criterion appear in the Search Assistant.
6. Click a link in the Search Assistant.
7. A Web page matching your search criterion is displayed in Internet Explorer's display pane.

4

Selecting a Search Engine

To select a search engine

1. On the toolbar, click the Search button.
2. The Search Assistant is displayed.
3. Type your search term in the Find A Web Page Containing text box, and click Search.
4. A list of links related to your search word appears.

(continued)

5

Selecting a Search Engine

To select a search engine

(continued)

5. If you click only the Next button and not the drop-down arrow, the next search engine in the list will conduct a search on your search term.
6. In the Search Assistant, click the drop-down arrow to the right of the Next Button.
7. A list of search engines appears.
8. Click on one of the search engines.
9. The search engine displays a new list of links related to your search term.

6

Using Autosearch

To use Autosearch

1. Click in the Address bar.
2. Internet Explorer selects the current text.
3. Type your search term, and then press Enter.
4. The Autosearch Web page appears with a list of hyperlinks related to your search term.
5. Click any hyperlink on the Autosearch page to display a Web site related to you search term.
6. Internet Explorer displays the Web site of the hyperlink you clicked.

7

Adding a Web Page to Your Favorites List

To add a Web page to your Favorites list

1. Click in the Address bar, type the address of the Web page, and press Enter.
2. The home page of the Web address is displayed.
3. On the toolbar, click the Favorites button.
4. The Favorites bar is displayed.

(continued)

8

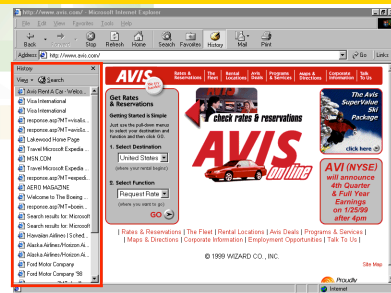
Adding a Web Page to Your Favorites List

To add a Web page to your Favorites list (continued)

5. On the Favorites bar, click the Add button.
6. The Add Favorite dialog box appears.
7. In the Add Favorite dialog box, click OK.
8. The Favorites list now includes a link to the Web page.

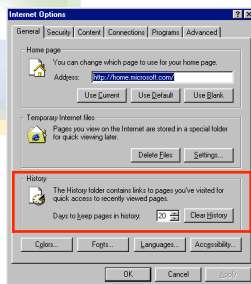
9

Using the History Folder



10

Configuring and Clearing Your History Settings



11